



# Glucose Sensor

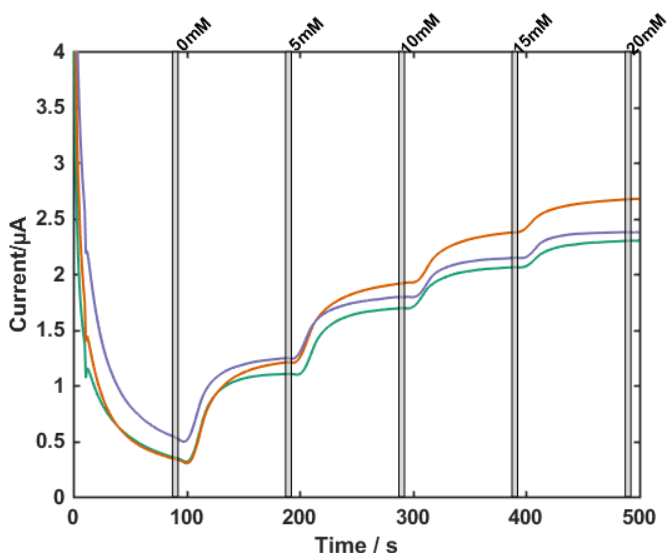
## Product description

Zimmer and Peacock's glucose sensors can be used in continuous or discrete mode. The ZP glucose sensor is a unique formulation as it can be used either for discrete measurements and disposed of after each use, or it can be left in place for continuous measurement. The sensors can be reused with a drop-in sensitivity of 5-10%.



Scan the QR-code for videos on how to use ZP sensors!

## Performance



ZP recommends the Anapot potentiostat when using our sensors.

The software "Lisa Analytics" for the Anapot can be found at:

<https://www.zimmerpeacocktech.com/knowledge-base/software/>

The link also contains videos on how to properly configure your device with the software.

## Sensor materials

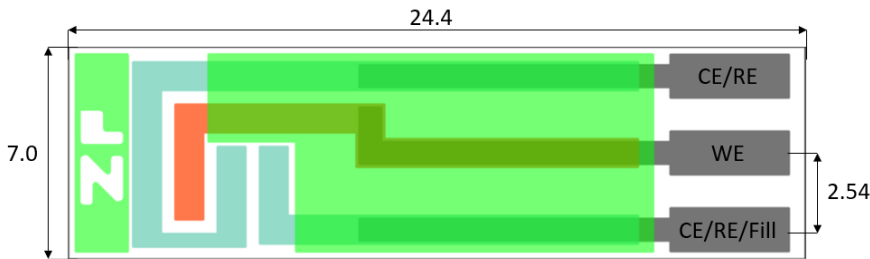
Substrate	Reference electrode	Working electrode	Counter electrode
Alumina	Silver/Silver Chloride (60/40)	Platinum	Silver/Silver Chloride (60/40)

[www.zimmerpeacock.com](http://www.zimmerpeacock.com)



# Glucose Sensor

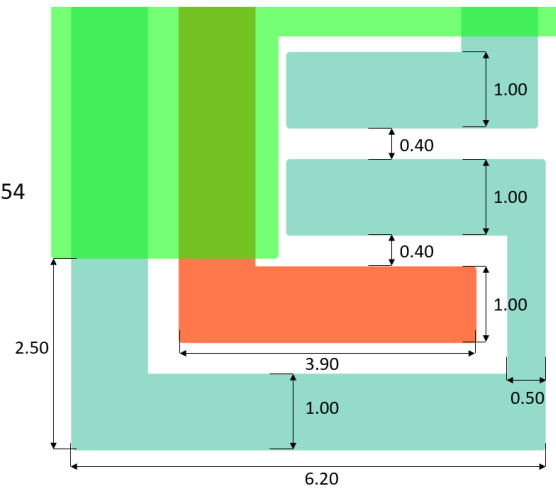
## Mechanical drawings



Thickness = 0.625

All units in mm

Sensor product code: ZPS303-000-00037



## Storage

Short term storage: Room temperature 20 - 50% RH

Long term storage: 4-8 °C for periods > 2-3 days

Protect from exposure to UV-light

Recommended usage within 6 months of fabrication

## Safety

Take caution when handling the sensors as the edges and corners are sharp

ZP recommends using gloves

This product is not tested for biocompatibility and ZP takes no responsibility for in-vivo usage

## Customizability

Zimmer and Peacock can also make customized sensors with the option to target other analytes than those listed in this datasheet. We can offer different electrode configurations, geometry, and materials. Please contact us through the contact form on [www.zimmerpeacock.com](http://www.zimmerpeacock.com) or by e-mail on [sales@zimmerpeacock.com](mailto:sales@zimmerpeacock.com) for questions regarding customized sensors

[www.zimmerpeacock.com](http://www.zimmerpeacock.com)